

A photograph of a stone wall in a wooded area, with a green banner overlaid containing text.

# Acton Quarry *After-use*

Where we are.  
Where we want to be.  
*Together.*

March 2011

# Overview - Past, Present and Future

## Land Use



# Where we are. Where we want to be.

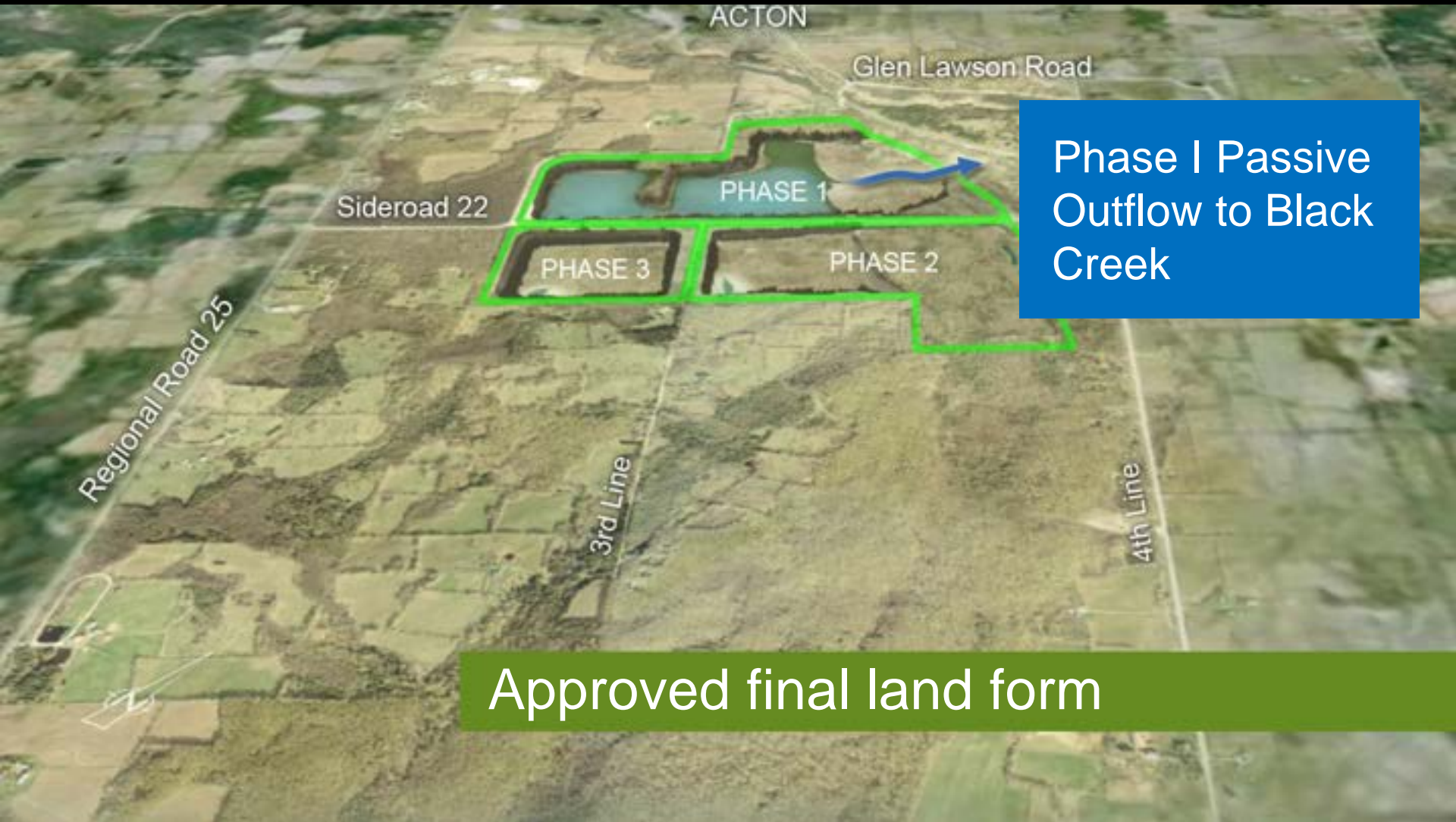


- History of Quarry Activity
- JART Process
- Dufferin's Commitment to Community

Where we will be in  $\pm 6$  years.



Where we will be in  $\pm 6$  years.



Phase I Passive  
Outflow to Black  
Creek

Approved final land form

Where we will be in  $\pm 6$  years.



Phase I Passive  
Outflow to Black  
Creek

Phase 2 and 3 pumped  
outflow to Black Creek and  
16 Mile Creek

Approved final land form

# Doing our part to enhance the approved plan.



- Phase 1 now includes a lake, island, a large wetland, a watercourse that provides passive discharge to Black Creek, and forested side slopes with areas of exposed cliff faces
- Phase 2 East now includes hummocky topography providing upland and wetland conditions, and landscape connections that will also expand the forested Escarpment corridor

# Future of the Existing Quarry



- Rehabilitated site available as early as 2020
- Town has option for ownership
- Development of the site will require additional approvals and funding
- Opportunities for environmental conservation and recreation
- Long-term pumping required to keep landform dry
- Water benefits not realized without changes



# Where do we go from here?



- Extension  
Rehabilitation  
Vision
- Continued  
extraction:  
*Business Case*  
for various  
opportunities

# The Extension Rehabilitation Vision



## Objectives:

- Environmental protection and conservation
- Natural corridor linkages
- Public ownership and education
- Opportunities for water management

# Benefits to the Community

## Land Use



# Rehabilitation takes less time than you think...



Beginning in the early 1990's

Dufferin Milton Quarry Rehabilitation Example

Rehabilitation takes less time than you think...



Finishing up in 2002

Dufferin Milton Quarry Rehabilitation Example

Rehabilitation takes less time than you think...



2007

Dufferin Milton Quarry Rehabilitation Example

# Acton's vision could be realized in a similar timeframe



## Opportunities:

- Glen Lawson Lands
- Acton North Lands
- Acton South Lands

# Let's put the Vision into action in Acton



- Timelines
- Ownership/Partnership decisions
- Landform input
- Agreements/Securities

*in time...*

**OPA and ZBLA decisions  
on the extension**



Where we want to be. *Together.*

